



CIVIC SX HATCH

COLOUR AVAILABILITY



POWERTRAIN

- 1.8 litre, 4 Cylinder, 16 valve, i-VTEC engine
 - 104 kW @ 6500 rpm
 - 174 Nm @ 4300 rpm
- EarthDreams Automatic CVT Transmission
- Eco Assist and ECON Mode

EXTERIOR

- 16" Alloy Wheels
- Halogen Projector Headlights
- Halogen Front Fog Lamps
- Headlight Auto-off (Welcome Home Function)
- LED Daytime Running Lights (DRL)
- LED Tail Lights with light bars
- Parking Sensors (front & rear)
- Variable Intermittent Wipers
- Electric Adjustable Door Mirrors with LED integrated indicators

INFOTAINMENT

- Advanced Display Audio 7" Touch Screen System:
 - Apple CarPlay™ 1
 - Android Auto™ 2
 - AM/FM Radio
 - Bluetooth phone and audio connectivity
 - USB & HDMI Connectivity
 - 3 Angle Reversing Camera with Dynamic Parking Aid
 - 8 Speaker Audio System

INTERIOR

- Black Premium Fabric Interior Trim
- Smart Proximity Key with Push Button Start/Stop
- Walk Away Auto Lock
- Leather Wrapped Steering Wheel
- One Touch Indicators
- Digital Climate Control
- Tilt & reach adjustable Steering Wheel
- Cruise Control with Straight Drive Assist
- Customisable Speed Alarm
- 60:40 Folding Rear Seat with ISOFIX

SAFETY

- LaneWatch Camera
- SRS Airbags Dual Front, Side & Full Length Curtain
- Agile Handling Assist (AHA)
- Motion Adaptive Electronic Power Steering (MA-EPS)
- Tyre Deflation Warning System (DWS)
- Electric Parking Brake (EPB) with Electronic Brake Hold
- Electronic Brakeforce Distribution (EBD)
- Emergency Stop Signal (ESS)
- Hill Start Assist (HSA)
- Vehicle Stability Assist (VSA)
- Security Alarm



CIVIC HATCH SPECIFIC FEATURES

- Piano Black Finishes
 - Upper & Lower Grille
 - B Pillar Trims
 - Tailgate Spoiler
- Retractable Tonneau Cover
- Auto Rear Wiper
- Shark Fin Antenna
- Roof Spoiler (Body Colour)
- Dark Interior Roof Lining



CIVIC SX SPORT

Additional features over the Civic SX Hatch

- SX Sport Body Kit - Tuscan Orange
 - Front Under Spoiler
 - Side Under Spoiler
 - Rear Under Spoiler
- 17" Modulo Alloys
- Alloy Sports Pedals
- Window Tinting



TUSCAN ORANGE SIDE UNDER SKIRT



17" MODULO ALLOY



TUSCAN ORANGE REAR UNDER SPOILER



CIVIC SX L

Additional features over the Civic SX Hatch

PREMIUM LEATHER TRIM

High quality leather is fitted to the seats and door trims to take luxury to the next level. Stunning Shark Grey colour leather is set off with Carbon Black accent panels for a timeless look that beautifully lightens up the cabin space.



Active Apple CarPlay™ connection shown.



AUDIO & CONNECTIVITY

ADVANCED DISPLAY AUDIO

The Civic offers the latest in smartphone connectivity, allowing you to seamlessly integrate either Apple or Android devices with the Advanced Display Audio Unit.

Apple CarPlay™ is a smarter, safer and more fun way to use your iPhone in the car. It offers easy navigation and extensive audio and communication capabilities, all while you keep your eyes safely on the road. Use Apple's highly intelligent Siri voice assistant to get directions, make calls, send and receive messages, and select your favourite music.

Android Auto™ allows you to quickly connect your compatible smartphone for navigation, communications, music and more. By extending the Android platform in a way that's purpose built for the car, Android Auto is designed as powerful voice actions, with safety in mind.

VOICE COMMANDS

Connecting a device featuring voice commands will enable you to create a text message, find a location, even check the weather, at the touch of a steering wheel mounted button.

MULTI ANGLE REVERSING CAMERA

Shift into reverse and the multi angle camera automatically displays one of three rear views on the Advanced Display Audio Unit. The Civic combines information received from parking sensors and steering, to perfectly project and display your path as dynamic guidelines overlaid on the reversing camera feed.

LANEWATCH CAMERA

Honda's LaneWatch Camera is the next step in blind spot detection. When indicating left, or at the push of a button, a camera mounted under the passenger wing mirror shows a sweeping 80° view – making lane changes safer than ever.

DRIVER INFORMATION INTERFACE

A quick glance behind the steering wheel shows what's playing, who's calling and almost everything else you need to know including outside temperature, average fuel consumption, trip metre and distance to empty.



COLOUR RANGE



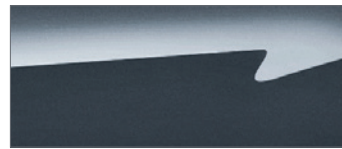
RALLYE RED



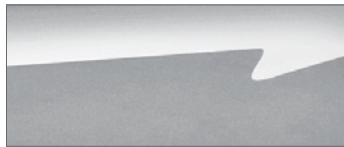
BRILLIANT SPORTY BLUE METALLIC



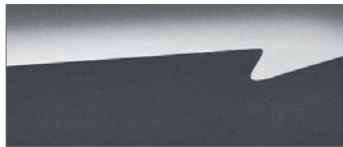
WHITE ORCHID PEARL



COSMIC BLUE METALLIC



LUNAR SILVER METALLIC

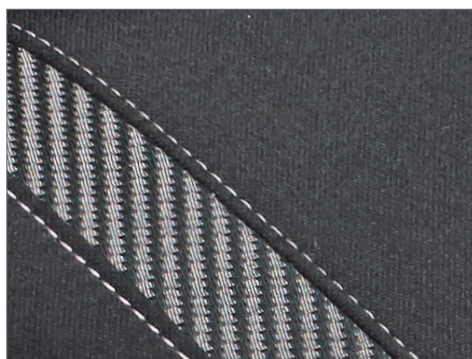


MODERN STEEL METALLIC



CRYSTAL BLACK PEARL

TRIM



CIVIC SX FABRIC



CIVIC SXL PREMIUM LEATHER

CLASS LEADING SPACE



SEATS | **5**

LOW LOAD HEIGHT | **679** mm

WIDE BOOT OPENING | **1120** mm

BOOT CAPACITY* | **414** l

REAR STORAGE CAPACITY | **1203** l

* Litres in VDA Standard, Boot Capacity (Rear Seat Up), International specification, comparable to SX Grade.

SPECIFICATIONS

ENGINE PERFORMANCE

	Civic SX Hatch
1.8 litre, 4 Cylinder, 16 valve, i-VTEC, chain drive SOHC	✓
Maximum Power (kW/rpm)	104kW @ 6500
Maximum Torque (Nm/rpm)	174Nm @ 4200
Fuel Type (Octane Rating)	91

TRANSMISSION

EarthDreams Automatic Transmission:	✓
- Automatic CVT with G Design Shift	✓
Hill Start Assist (HSA)	✓

BRAKING

Braking with ABS, Electronic Brakeforce Distribution (EBD)	✓
Emergency Brake Assist (EBA)	✓
Brakes - Ventilated Discs	Front
Brakes - Solid Discs	Rear
Electric Parking Brake with Electronic Brake Hold	✓

HANDLING

Suspension Type - Front MacPherson Strut, Rear Multi Link Independent	✓
Stabiliser Bars	✓
Motion Adaptive Electronic Power Steering (MA-EPS)	✓
Vehicle Stability Assist (VSA) with Traction Control (TCS)	✓
Agile Handling Assist (AHA)	✓

WHEELS

16" Alloy Wheels, (16 x 7.0J) with 215/55 R16 93H Tyres	✓
Spare Wheel	Compact

EQUIPMENT

ANCAP Safety Rating	5 Star
Next Generation Advanced Compatibility Engineering (ACE) collision compatibility body	✓
Emergency Stop Signal (ESS) – Hazard Light Activation	✓

AIRBAGS

Number of Airbags	6
Front SRS Airbags, Side Airbags in Front Seats	✓
Full length Side Curtain SRS Airbags	✓

SEATBELTS

3 point ELR Seatbelts (Front & Rear) with Rear Automatic Locking Reel	✓
Seatbelt Reminders (Front & Rear)	✓
Pretensioners, Load Limiters, height adjustable Anchor Points (front)	✓

CHILDREN

3 Child Seat Tether Points, 2 ISOFIX Sets	✓
Child Proof Rear Door Locks	✓

ADVANCED ACTIVE SAFETY

Straight Driving Assist	✓
LaneWatch Camera	✓
Cruise Control with Speed Limiter	✓

DIMENSIONS/CAPACITIES

Wheelbase (mm)	2700
Length (mm)	4515
Height (mm)	1421
Width (mm)	1799
Towing Weight (kg braked)	800
Weight (kg)	1261
Max Weight (kg)	1750
Fuel Tank Capacity (litres)	47

FUEL ECONOMY & EMISSIONS

Automatic CVT - (L/100km ADR)	6.4
Automatic CVT - CO ₂ Emmissions (g/km)	148



ELECTRONIC BRAKE HOLD

Never again will you spend your time stopped in traffic stepping on the brake pedal. Simply press the automatic Brake Hold button and the system will hold the Civic in position without you having to step on the brake. The clever system automatically releases the brake as you press the accelerator pedal so long as the driver's seatbelt is engaged.

EMERGENCY STOP SIGNAL

The Emergency Stop Signal automatically activates the brake and hazard warning lights when it detects an emergency stop situation. The lights blink rapidly to warn following vehicles that the car is stopping abruptly, reducing the risk of a collision.



INTERIOR

	Civic SX Hatch
MULTIMEDIA	
LCD Instrument Cluster with multi function colour display	✓
Advanced Display Audio - 7" Touch Screen System	✓
- Apple CarPlay with Siri Eyes Free	✓
- Android Auto with Google Voice	✓
3 Angle Reversing Camera with Dynamic Parking Aid & Sensors	✓
HDMI / USB input (iPod & MP3 / WMA Compatibility)	✓
Fast Charge USB Port	✓
Bluetooth Music Streaming	✓
Steering Wheel Mounted Audio & Bluetooth Controls	✓
Bluetooth Hands Free Telephone (HFT) system	✓
Customisable Android Interface with optional skins, widgets & apps	✓
Default Display Colour	Blue
SPEAKERS	
Speakers	8
Tweeters	Front & Rear
Front	✓
Rear	✓

COMFORT

Accessory power outlets (12V)	✓
Driver and passenger vanity mirrors	✓
Cupholders	8
One Touch Indicators	✓

AIR CONDITIONING

Digital Climate Control	✓
Dust/Pollen filter	✓

STEERING WHEEL

Wheel & Shifter Trim	Leather Wheel
Tilt and Reach Adjustable Steering Wheel	✓
Steering Wheel mounted Cruise Control / Audio Controls	✓

SEATS

Front - Manual adjustable, height adjustable for Drivers	✓
Rear - Adjustable Headrests with 60:40 split fold down	✓

UPHOLSTERY

Interior Trim	Sports Fabric
Roof Lining & Pillar Trims	Dark

ELECTRIC WINDOWS

Auto up/down	Front
Window lock/unlock switches	Front

EXTERIOR

Intermittent front windscreen wipers	Variable
Auto Rear Wiper (Reverse Linked)	✓
Parking Sensors	Front & Rear
Tailgate Spoiler (Piano Black)	✓
Roof Spoiler (Body Colour)	✓
Grille & Headlight Trim	Piano Black
Sharkfin Antenna	✓
Door Handles	Body Colour
Piano Black Pillar Finishes	✓
SX Sport Kit (Front, Side & Rear Underspoiler - Tuscan Orange)	SX Sport

LIGHTS

Headlights	Halogen
Front Fog Lamps	Halogen
LED Daytime Running Lights (DRL)	✓
Headlight Auto-off (Welcome Home Function)	✓

ELECTRIC DOOR MIRRORS

Electric adjust	✓
Manual Folding with integrated indicator	✓

SECURITY

Keyless Entry with Remote Central Locking	✓
Smart Proximity Key	✓
Push Button Start/Stop	✓
Automatic 'Walk Away' Door Locking ³	✓
Integrated Security Alarm System	✓
Immobiliser	✓

1 Apple CarPlay, iPhone and Siri are trademarks of Apple Inc. CarPlay and Siri require iPhone 5 model and above running iOS 7.1 or higher.

2 Android, Android Auto and Google are trademarks of Google Inc. Android Auto requires Android™ 5.0 (Lollipop) or higher.

3 This function set to off as the factory default setting. It can be turned on via the Infotainment screen.

For more information, visit www.honda.co.nz/civic or see your local dealer. Leather trims include some non-leather materials in high impact areas. Colours are indicative only. See your dealership for an accurate colour reference. All care is taken to ensure the accuracy of this brochure at the time of publication. Specifications, features and model availability may change without notification. International imagery may be used reflecting international specifications.

**BODY AND
MECHANICAL
WARRANTY**

**24 HOUR
ROADSIDE
ASSISTANCE**

**24 HOUR
COLLISION
ASSISTANCE**

FOR 5 YEARS AND UNLIMITED KMS